

**MOREHEAD STATE UNIVERSITY**  
A4069-01  
**ANIMAL WELFARE ASSURANCE**  
**in accordance with the PHS Policy for**  
**Humane Care and Use of Laboratory Animals**

I, Bruce A. Mattingly, PhD, as named Institutional Official for animal care and use at Morehead State University, hereinafter referred to as Institution, by means of this document, provide assurance that this Institution will comply with the Public Health Service Policy on Humane Care and Use of Laboratory Animals, hereinafter referred to as PHS Policy.

**I. APPLICABILITY OF ASSURANCE**

This Assurance is applicable to all research, research training, experimentation, biological testing, and related activities, hereinafter referred to as activities, involving live vertebrate animals supported by the Public Health Service (PHS) and conducted at this Institution, or at another institution as a consequence of the subgranting or subcontracting of a PHS-conducted or -supported activity by this Institution.

"Institution" includes the following branches and major components of Morehead State University: College of Science & Technology: Department of Agricultural & Human Sciences, Department of Biological & Environmental Sciences, and Department of Psychology.

**II. INSTITUTIONAL COMMITMENT**

A. This Institution will comply with all applicable provisions of the Animal Welfare Act and other federal statutes and regulations relating to animals.

B. This Institution is guided by the "U.S. Government Principles for the Utilization and Care of Vertebrate Animals Used in Testing, Research, and Training."

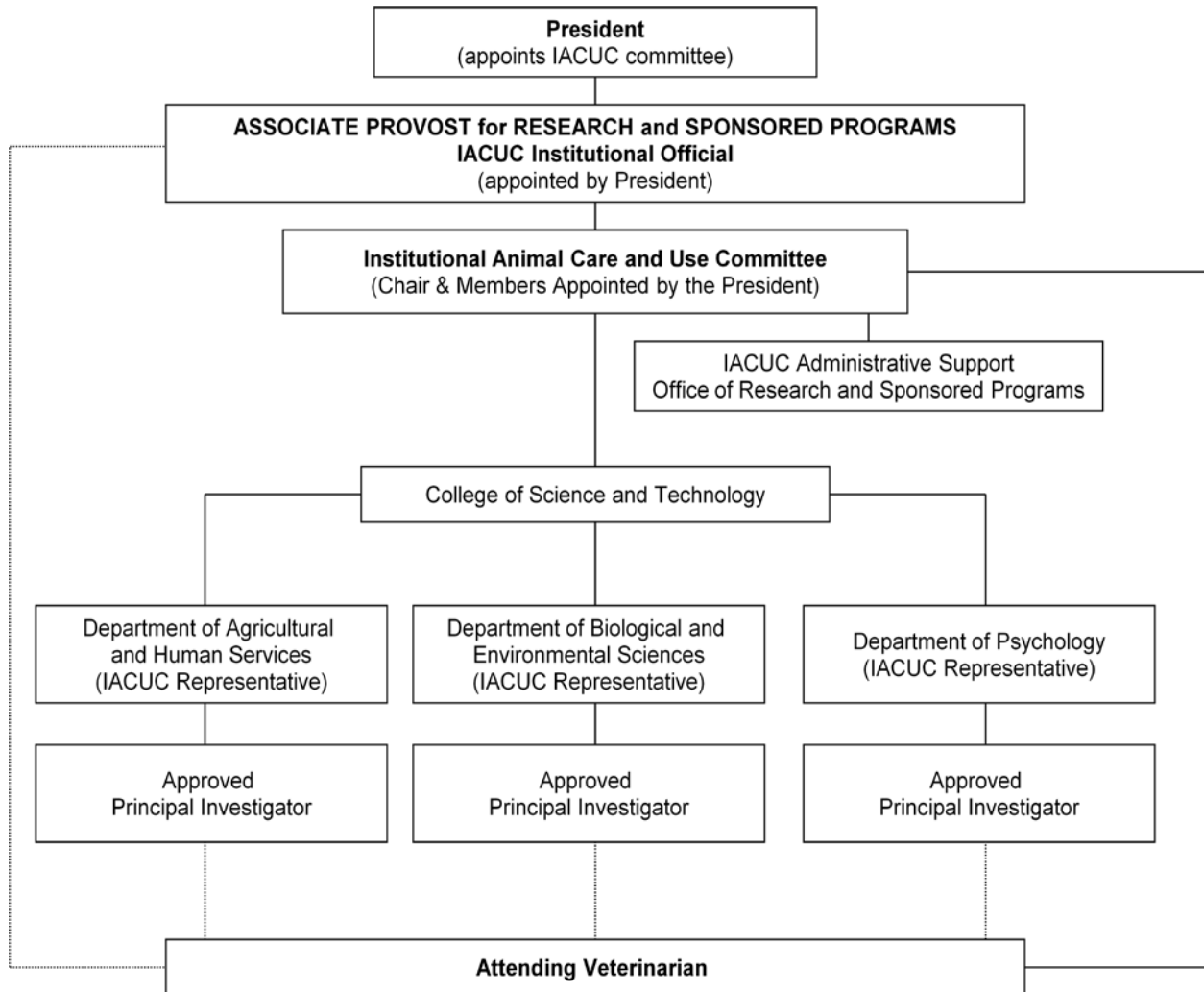
C. This Institution acknowledges and accepts responsibility for the care and use of animals involved in activities covered by this Assurance. As partial fulfillment of this responsibility, this Institution will ensure that all individuals involved in the care and use of laboratory animals understand their individual and collective responsibilities for compliance with this Assurance, as well as all other applicable laws and regulations pertaining to animal care and use.

D. This Institution has established and will maintain a program for activities involving animals in accordance with the "Guide for the Care and Use of Laboratory Animals" ("Guide").

**III. INSTITUTIONAL PROGRAM FOR ANIMAL CARE AND USE**

A. The lines of authority and responsibility for administering the program and ensuring compliance with this Policy are as follows:

**MOREHEAD STATE UNIVERSITY**  
**Institutional Animal Care and Use Committee Administrative Structure**



B. The qualifications, authority, and percent of time contributed by the veterinarian(s) who will participate in the program are as follows:

Name: Dr. Philip E. Prater, DVM

Qualifications:

- Degrees: Diplomat, American College of Theriogenologists, Doctor of Veterinary Medicine, 1984, Ohio State University; Professor, Department of Agricultural and Human Sciences, Veterinary Technology Program, from 1998 to present; and

Large Animal Clinical Instructor, Veterinary Technology Program, 1998 to present.

- Training and/or experience in laboratory animal medicine: one-year internship, Ohio State University – CVM; three-year residency and graduate work at the University of Tennessee – CVM; ten years experience in large and small animal practice; and six years experience in the care and use of animals in teaching and research. Licensed DVM in Kentucky with at least 15 hours of continuing education per year as required by the Kentucky State Board of Veterinary Medical Examiners. Attending Veterinarian, MSU Institutional Animal Care and Use Committee, 2002 to present. Full-time faculty member in the Veterinary Technology Program, responsible for the equine, bovine, ovine, caprine, and porcine and laboratory animal health care program of the Veterinary Technology Program.

Authority: Dr. Prater has direct program authority and responsibility for the Institution's animal care and use program. The attending veterinarian is a permanent member of the IACUC as long as he/she serves the institution in the capacity of attending veterinarian. Time Contributed to Program: Full time employee (70% time devoted to animal care).

Name: Dr. Kimberly M. Peterson, DVM

Qualifications:

- Degrees: Doctor of Veterinary Medicine, 1984, Colorado State University; Assistant Professor, Department of Agricultural and Human Sciences, Veterinary Technology Program from January 2006 to present, Laboratory Animal, Small Animal, Avian and Equine Clinical Instructor.
- Training and/or experience in laboratory animal medicine: twenty-three years of clinical experience in mixed animal veterinary practice, ten years experience in teaching the care of animals to veterinary technician preceptors, involved with the care and use of animals in teaching and research from January 2006 to present. Licensed DVM in Kentucky with at least 15 hours of continuing education per year, as required by the Kentucky State Board of Veterinary Medical Examiners. IACUC Representative for the Department of Agricultural and Human Sciences from January 2006 to present.

Responsibilities: Full time Assistant Professor in the Veterinary Technology Program with responsibilities in the laboratory animal science, canine, feline, avian, equine and livestock animal health care program of the Veterinary Technology Program.

Time Contributed to Program: Full time employee (70% time devoted to animal care).

Name: Dr. Scott W. Rundell, DVM

Qualifications:

- Degrees: Doctor of Veterinary Medicine, 1976, Michigan State University; Associate Professor, Department of Agricultural and Human Sciences, from 1984 to present; and Coordinator, Veterinary Technology Program, 1997 to present.
- Training and/or experience in laboratory animal medicine: six years experience in small animal practice, two years postdoctoral education in microbiology, 16 years experience in the care and use of animals in teaching and research. Licensed DVM in Kentucky with at least 15 hours of continuing education per

year as required by the Kentucky State Board of Veterinary Medical Examiners.  
Chair, MSU Animal Welfare Committee, 1986 to 1989.

Responsibilities: Full-time faculty member in the Veterinary Technology Program responsible in part for the canine, feline, and laboratory animal health care program of the Veterinary Technology Program. Dr. Rundell will provide backup veterinary care.  
Time Contributed to Program: Full time employee (70% time devoted to animal care).

C. The Institutional Animal Care and Use Committee (IACUC) at this Institution is properly appointed in accordance with the PHS Policy IV.A.3.a and is qualified through the experience and expertise of its members to oversee the Institution's animal care and use program and facilities. The IACUC consists of at least five members, and its membership meets the composition requirements set forth in the PHS Policy, Section IV.A.3.b. Attached is a list of the chairperson and members of the IACUC and their names, degrees, profession, titles or specialties, and institutional affiliations. (see **Appendix A**)

D. The IACUC will:

1. Review at least once every six months the Institution's program for humane care and use of animals, using the "Guide" as a basis for evaluation. The IACUC procedures for conducting semiannual program reviews are as follows:

Major topics/items reviewed during the semiannual program review follow the modified OLAW checklist and include: (a) IACUC membership and functions, (b) IACUC records and reporting requirements, (c) veterinary care, (d) personnel qualifications and training, and (e) occupational health and safety of personnel. The semiannual program review is conducted during a regular scheduled meeting of the IACUC.

2. Inspect at least once every six months all of the Institution's animal facilities, including satellite facilities, using the "Guide" as a basis for evaluation. The IACUC procedures for conducting semiannual facility inspections are as follows:

Every six months the IACUC Chair will arrange for subcommittees of at least two IACUC members to inspect all animal housing and use areas of the Institution (NOTE: All committee members are invited to participate in the semiannual facility inspections). Each animal use area (agricultural and human sciences, biological and environmental sciences, and psychology) will be evaluated using the following standard operating procedures:

- A. Procurement of Animals (procurement, transport, quarantine, evaluation, acclimation, identification)
- B. Housing of Animals (segregation, environmental conditions, sanitation of animal housing)
- C. Disease Control Measures (surveillance, diagnosis, treatment and control, preventative medicine, diagnostic resources, veterinary care, surgery, pain/distress/analgesia/anesthesia, disposition of animals)

The subcommittees will conduct the semiannual continuing review of approved protocols (see III.D.9) during the facility inspections and, as necessary, interview animal laboratory personnel, investigators, and educators that use animals. The department chair and/or program coordinator of each animal use area will be notified immediately by the IACUC Chair of any major and/or minor deficiencies noted by the subcommittee on the Inspection Deficiencies Form. The department chair and/or program coordinator will take immediate action to correct the noted deficiencies and provide the IACUC feedback by the correction deadline date.

3. Prepare reports of the IACUC evaluations as set forth in the PHS Policy IV.B.3 and submit the reports to the Institutional Official. The IACUC procedures for developing reports and submitting them to the Institutional Official are as follows:

The official semiannual report of the IACUC's inspection and evaluation of the Institution's animal programs and facilities are developed and approved by a quorum of the IACUC and submitted to the Institutional Official.

The report includes IACUC minority views, a description of departures from the Guide or PHS Policy and reasons for such departures, a distinction between significant and minor deficiencies, and a plan and schedule for the correction of each deficiency described (see **Semiannual Evaluation of Animal Care and Use Program and Inspection of Facilities Report, Appendix B**).

The report is signed by all IACUC members to confirm action by the committee.

4. Review concerns involving the care and use of animals at the Institution. The IACUC procedures for reviewing concerns are as follows:

Any written concerns involving the care and use of animals at this Institution will be treated confidentially to protect the identity of the concerned individual(s) and against reprisal as required under the Animal Welfare Act. The IACUC Chair will conduct the initial investigation and, if warranted, convene the IACUC to evaluate the concerns and determine if the concerns are valid. If valid, the IACUC, by quorum vote, will recommend action to correct, suspend, or terminate. The IACUC Chair will report the committee's recommendation to the Institutional Official. The Institutional Official and the Office of Laboratory Animal Welfare (OLAW) will be notified if there is a finding of serious and/or ongoing Guide deviations or PHS Policy noncompliance, or if the IACUC suspends a previously approved protocol. Conspicuous and visible signs are posted in all animal areas and animal laboratories where animals are used describing how to report a concern and who to contact.

5. Make written recommendations to the Institutional Official regarding any aspect of the Institution's animal program, facilities, or personnel training. The procedures for making recommendations to the Institutional Official are as follows:

If at any time the IACUC determines that recommendations regarding the Institution's animal care and use program or facilities or personnel training should be made, the

IACUC will designate the Chair to provide written recommendations to the Institutional Official.

The attending veterinarian has direct and delegated authority to implement the PHS Policy and the provisions of the Guide and may determine that recommendations regarding the Institution's animal care and use program or facilities or personnel training should be made. These written recommendations will be forwarded to the Institutional Official.

6. In accord with the PHS Policy IV.C.1-3, the IACUC shall review and approve, require modifications in (to secure approval), or withhold approval of PHS-supported activities related to the care and use of animals. The IACUC procedures for protocol review are as follows:

The IACUC requires a *Protocol Application for the Use of Animals in Teaching, Testing, and/or Research* be submitted and approved by the IACUC prior to the initiation of any animal use.

Protocol applications submitted to the IACUC Chair will be distributed to each IACUC member as confidential information for review within two weeks of the next meeting. At the next meeting at which a quorum is present, the IACUC will discuss the protocol application in closed session and vote on the protocol application in open session using protocol numbers, not principal investigator names, to protect the identity of the principal investigators.

Researchers of protocol applications not approved by the IACUC will be notified by the chair. The principal investigator will have an opportunity to respond to concerns in writing and/or will be required to modify or justify the protocol application prior to consideration by the IACUC at the next meeting. Several outcomes are possible after a protocol is reviewed by the full board. They include: full approval (no changes necessary), pending approval with substantive changes (after changes made, protocol must again be presented for full board review), approval with minor changes (after changes made, protocol may be reviewed and fully approved by IACUC Chair), and disapproval (protocol not approved, no research involving animals is permitted).

The IACUC procedures for meeting attendance and voting on animal use projects are:

- IACUC attendance requirements for a quorum must include a majority of the voting members.
- IACUC voting on animal use projects is conducted when a quorum is present. IACUC motions are passed by a majority of the quorum present.

7. Review and approve, require modifications in (to secure approval), or withhold approval of proposed significant changes regarding the use of animals in ongoing activities as set forth in the PHS Policy IV.C. The IACUC procedures for reviewing proposed significant changes in ongoing research projects are as follows:

Proposed significant changes are reviewed using the process described in Part III.D.6.

8. Notify investigators and the Institution in writing of its decision to approve or withhold approval of those activities related to the care and use of animals, or of modifications required to secure IACUC approval as set forth in the PHS Policy IV.C.4. The IACUC procedures to notify investigators and the Institution of its decisions regarding protocol review are as follows:

Principal investigators and appropriate institutional officials will be notified in writing by the IACUC Chair of the IACUC decision to approve or withhold approval of the proposed research activity related to the care and use of animals, or of modifications required to secure IACUC approval.

If the IACUC's decision is to require modifications or disapprove the protocol application, the principal investigator and appropriate institutional officials will receive written notification of the reasons for the decision.

The principal investigator will be required to modify or justify the protocol application prior to consideration by the IACUC.

9. Conduct continuing review of each previously approved, ongoing activity covered by PHS Policy at appropriate intervals as determined by the IACUC, including a complete review in accordance with the PHS Policy IV.C.1-4 at least once every three years. The IACUC procedures for conducting continuing reviews are as follows:

**All** approved protocols of more than a one-year duration are subject to annual monitoring and continuing review. Principal investigators are notified by email that annual monitoring and continuing review of activities is required and the forms are provided electronically. The IACUC department representatives will remind principal investigators that the forms must be submitted and approval received prior to continued use of animals or of the possible consequences if animals are used without an approval. The principal investigator is responsible for completing and submitting continuing review and revision forms as well as new literature search results, which will provide assurance related to the: active status; completed activities conducted in accordance with the approved protocol; proposed departures from the approved protocol; protocol changes, alternatives to animal use, alternatives to any potentially painful procedure, and duplication. The annual continuing review will be conducted at a regularly scheduled meeting. The principal investigator must receive a written approval from the IACUC prior to implementation of any changes and the continued use of animals.

Proposed protocol changes deemed significant may require a new protocol application (see III.D.6).

Every three years, principal investigators with multi-year protocols are required to submit a new protocol application which is reviewed de novo prior to approval for using animals.

At the semiannual inspection, the principal investigator must provide a completed Animal Use Report and animal use records. The IACUC subcommittee designated to conduct each department (agricultural and human sciences, biological and environmental sciences, and psychology) inspects both, and the Animal Use Report is collected and placed in the protocol file.

10. Be authorized to suspend an activity involving animals as set forth in the PHS Policy IV.C.6. The IACUC procedures for suspending an ongoing activity are as follows:

Suspension of an activity occurs only after review of the matter at a convened meeting of a quorum of the IACUC and with the suspension vote of a majority of the quorum present after which the principal investigator is notified in writing by the IACUC Chair of the IACUC's determination that significant departures from the approved protocol occurred. If the IACUC suspends an activity involving animals, the Institutional Official in consultation with the IACUC reviews the reasons for suspension, takes appropriate corrective action, and reports that action with a full explanation to OLAW. The attending veterinarian can temporarily suspend a protocol if significant departures from the approved protocol exist until the committee can convene.

If any animal use activity which has not been reviewed and approved by the IACUC is discovered, the activity will be suspended immediately by the IACUC at a convened meeting with a quorum present. *In addition, the individuals involved may be subject to disciplinary action by this Institution.*

E. The occupational health and safety program for personnel working in laboratory animal facilities or have frequent contact with animals is as follows:

The occupational health and safety program for personnel who work in laboratory animal facilities or have frequent contact with animals is outlined in the University's Administrative Regulation (UAR 118.04), **Occupational Health for Animal Care Workers (OH)**. The administrative regulation outlined in the OH covers:

1. institutional policies for personal hygiene, handling hazardous agents, and personnel protection,
2. pre-employment medical evaluation, required immunizations, preventive medicine program, zoonosis surveillance, and procedures for reporting and treating injuries, and
3. description of covered personnel; procedures for hazard and risk assessment; and training of personnel (e.g., on zoonoses, allergies, hazards, special precautions for pregnancy, illness, immune suppression).

The handling and disposal of hazardous biological, chemical or radioactive materials are conducted in accordance with Occupational Safety and Health Administration (OSHA) standards.

For personnel and students who have significant contact with laboratory animals, the following is a brief description of the OH:

All individuals in contact with animals are informed of the possible dangers of disease transmission between animals and humans, the risk of injury due to bites, kicks and scratches, and the risk of allergic reaction to animals, and the basic precautions that are to be followed to reduce these risks. These individuals receive and are required to carefully review the OH. The OH is posted in all locations in which animals are housed or handled. The OH emphasizes the importance of personal hygiene, knowledge of animal behavior, and Centers for Disease Control and Prevention and National Institutes of Health guidelines for conducting activities in the animal care setting. The importance of vaccinations is stressed, with the requirement that all animal care workers provide current documentation of required tetanus immunization and, as appropriate, rabies immunization. In addition, employees who have significant contact with animals and/or animal care facilities are encouraged to have annual physical examinations; while all new employees are encouraged to have a pre-employment physical.

For on-the-job animal related injuries, employees and students of the Institution must follow procedures outlined in the managed care system for workers' compensation guidelines.

Morehead State University's occupational health professionals are involved in planning and monitoring of the occupational health program for animal care workers. The Director of Research Integrity and Compliance regularly consults with OH professionals reviewing, revising, and implementing policies or regulations regarding occupational health. The occupational health program for animal care workers is based on Risk Assessment and Hazard Identification, which is overseen by MSU's Office of Environmental Health and Safety.

All employees and new candidates for employment at Morehead State University who have significant contact with animals and/or in animal care facilities are encouraged to receive a complete history and annual physical examination. The physical examination should include urinalysis, hematology, chest x-rays, tuberculosis skin test, and necessary vaccinations. Tetanus vaccinations are required for all animal care employees working in animal care areas and are offered at a reduced rate. Other vaccinations (i.e. rabies) may be required depending on the species of animals utilized. The IACUC, in conjunction with the MSU health clinic monitors the need for re-vaccination and/or titer level checks to ensure proper levels of antibodies are present for immunity.

Personal hygiene, handling hazardous agents, and personnel protection issues for animal care workers at MSU are specific for each different animal care area. The IACUC and the Office of Environmental Health and Safety have allowed each specific area (department) to develop its own policies regarding personal hygiene, handling hazardous agents, and personnel protection. The IACUC departmental representative is responsible for the training and oversees the enforcement of these policies within that department including best practices and procedures biannually. All policies are

reviewed by the IACUC and must conform to guidelines from the PHS Policy on Humane Care and Use of Laboratory Animals. Additionally, faculty/staff/students are encouraged to utilize CITI's animal research modules to refresh their knowledge of federal guidelines concerning personal hygiene, handling hazardous agents, and personnel protection.

Training is provided in the areas of zoonoses, allergies, and hazards in three different ways. First, each department has a specific training program for their specific species' zoonotic diseases, allergies and hazards which is covered in depth at biannual training sessions and whenever new hires enter into animal care areas. Secondly, the IACUC handbook available to everyone involved in animal care has specific information regarding zoonoses for all species of animals utilized on our campus. Lastly, a University Administrative Regulation (UAR) exists outlining these zoonoses in detail.

Employees are trained regarding precautions to be taken during personnel pregnancy, illness, or decreased immunocompetence in the same way zoonoses, allergies, and hazards training occurs. Each department has a specific training program for their specific species' guidelines for people with illnesses, decreased immunocompetence, or who may be pregnant which is covered in depth at biannual training sessions and whenever new hires enter into animal care areas. Animal care workers who may become pregnant, ill, or become increasingly immunosuppressed will contact their departmental representative, who in turn reports to Environmental Health and Safety as well as the IACUC office.

Treatment is provided in the event of animal care workers being scratched, bitten, becoming ill, or an injury occurs. First aid kits are readily available in all animal care facilities and laboratories where animals are utilized. Also, those requiring medical assistance can be seen by the university health clinic, any local doctor approved by MSU's managed care system, or at the local hospital emergency department if the injury or illness is serious and/or occurs after regular business hours. All work related injuries and illnesses must be reported to MSU's managed care system.

F. The total gross number of square feet in each animal facility (including each satellite facility), the species of animals housed therein and the average daily inventory of animals, by species, in each facility is provided in the attached Facility and Species Inventory table. (see **Appendix C**)

G. The training or instruction available to scientists, animal technicians, and other personnel involved in animal care, treatment, or use is as follows:

- IACUC member(s) attend a minimum of one nationally sponsored meeting by OLAW, Scientists Center for Animal Welfare, American Association of Laboratory Animal Science (AALAS), Public Responsibility in Medicine and Research (PRIM&R) or other related associations annually to keep abreast of regulations, ways to safeguard animals in teaching, testing, and/or research, humane practice of animal care and use including training or instruction on research or testing

methods that minimize the number of animals required to obtain valid results and limit animal pain or distress.

- IACUC members consult with the University of Louisville IACUC staff on special issues, as appropriate.
- IACUC members conduct annual workshops by academic departments (agricultural and human sciences, biological and environmental sciences, and psychology) to update faculty, staff, and students regarding policies and/or to present special topics. IACUC members present the workshop agenda that includes the topics that were discussed and a list of the attendees at a scheduled meeting. The information is recorded in the minutes and the documentation is filed with the IACUC records.

The following training and/or instruction materials are provided:

- Audiovisual training tapes such as those produced by the National Association for Biomedical Research, the American Veterinary Medical Association, and other appropriate videotapes made available by this Institution for use by appropriate audiences.
- The Ralston Purina Laboratory Animal Care Course as presented in its "Manual for Laboratory Animal Care."
- AALAS training courses using appropriate training manuals.
- Courses for credit offered by programs in the Institution (such as VET 110, Animal Care Techniques I, a course on laboratory animal handling and care).
- Demonstrations and instruction by faculty and technical staff provided to students prior to actual animal use in courses.
- The Institution provides funding to support the continuing education of faculty and staff in the areas of laboratory animal care and use.
- All personnel and students involved in animal care, treatment, or use are provided training or instruction in the humane practice of animal care and use, including training or instruction on research or testing methods that minimize the number of animals required to obtain valid results and limit animal pain and distress. Training at the departmental level addresses the above mentioned issues. Also, all protocols submitted require literature searches which must provide evidence that the selected procedures used in the protocol are the most appropriate and that the numbers of animals requested for use are the least amount that will still yield valid results. Additionally, the option CITI animal modules address issues of pain and distress as well as optimal animal numbers.

#### **IV. INSTITUTIONAL PROGRAM EVALUATION AND ACCREDITATION**

All of this Institution's programs and facilities (including satellite facilities) for activities involving animals have been evaluated by the IACUC within the past six months and will be re-evaluated by the IACUC at least once every six months thereafter, in accord with the PHS Policy IV.B.1-2. Reports have been and will continue to be prepared in accord with the PHS Policy IV.B.3. All IACUC semiannual reports will include a description of the nature and extent of this Institution's adherence to the "Guide." Any departures from the "Guide" will be identified specifically and reasons for each departure will be stated. Reports will distinguish significant deficiencies from minor deficiencies. Where program or facility deficiencies are noted, reports will contain a reasonable and specific plan and schedule for correcting each deficiency. Semiannual reports of the IACUC's evaluations will be submitted to the Institutional Official. Semiannual reports of IACUC evaluations will be maintained by this Institution and made available to the OLAW upon request.

This Institution is Category Two (2)—not accredited by the Association for Assessment and Accreditation of Laboratory Animal Care, International (AAALAC). As noted above, reports of the IACUC's semiannual evaluations (program reviews and facility inspections) will be made available upon request.

#### **V. RECORDKEEPING REQUIREMENTS**

- A. This Institution will maintain for at least three years:
1. A copy of this Assurance and any modifications thereto, as approved by the PHS.
  2. Minutes of IACUC meetings, including records of attendance, activities of the committee, and committee deliberations.
  3. Records of applications, proposals, and proposed significant changes in the care and use of animals and whether IACUC approval was given or withheld.
  4. Records of semiannual IACUC reports and recommendations (including minority views) as forwarded to the Institutional Official, Dr. Bruce A. Mattingly.
  5. Records of accrediting body determinations.
- B. This Institution will maintain records that relate directly to applications, proposals, and proposed changes in ongoing activities reviewed and approved by the IACUC for the duration of the activity and for an additional three years after completion of the activity.
- C. All records shall be accessible for inspection and copying by authorized OLAW or other PHS representatives at reasonable times and in a reasonable manner.

#### **VI. REPORTING REQUIREMENTS**

- A. This Institution's reporting period is January 1—December 31. The IACUC, through the Institutional Official, will submit an annual report to OLAW on January 31 of each year. The report will include:

1. Any change in the accreditation status of the Institution (e.g., if the Institution obtains accreditation by AAALAC or AAALAC accreditation is revoked), any change in the description of the Institution's program for animal care and use as described in this Assurance, or any change in the IACUC membership. If there are no changes to report, this Institution will provide written notification that there are no changes.
2. Notification of the dates that the IACUC conducted its semiannual evaluations of the Institution's program and facilities (including satellite facilities) and submitted the evaluations to the Institutional Official, Dr. Bruce A. Mattingly.

B. The IACUC, through the Institutional Official, will promptly provide OLAW with a full explanation of the circumstances and actions taken with respect to:

1. Any serious or continuing noncompliance with the PHS Policy.
2. Any serious deviations from the provisions of the "Guide."
3. Any suspension of an activity by the IACUC.

C. Reports filed under sections VI.A. and VI.B. of this document shall include any minority views filed by members of the IACUC.

**VII. INSTITUTIONAL ENDORSEMENT AND PHS APPROVAL****A. Authorized Institutional Official**

Name: Bruce A. Mattingly, PhD

Title: Associate Provost, Research &amp; Sponsored Programs

Name of Institution: Morehead State University

Address: 901 Ginger Hall, Morehead, KY 40351

Phone: 606-783-2010

Fax: 606-783-2130

E-mail: b.mattingly@moreheadstate.edu

Signature: 

Date: 1-8-09

**B. PHS Approving Official**

Name: \_\_\_\_\_

Dr. Kim Taylor, DVM, DACLAM

Title:

Senior Assurance Officer  
Office of Laboratory Animal Welfare  
NIH/OD/OER

Address:

6705 Rockledge Drive  
RKL 1, Suite 360, Rm 3609-MSB 7982  
Bethesda, Maryland 20892-7982

Phone:

301-402-4325 kt60a@nih.gov

Fax:

301-915-9467

E-mail:

Signature: 

Date: 1/8/09

C. Effective Date of Assurance: 1/8/09

D. Expiration Date of Assurance: 12/31/2012