

Graduate Online Orientation

Welcome!

We are pleased that you are furthering your education with ***Morehead State University!***

The information presented in this orientation will assist you with the tools you need in order to get acclimated to the University.

“I’m admitted, what’s next?”

Have you initialized your WebAdvisor Account?

You must have a WebAdvisor account in order to register for courses.

You don’t have a WebAdvisor account and password?

1. On the top of the MSU home page, click the arrow beside of **“Top Links”** and select **“Eagle Express”**.
2. Click **“LOGIN to MSU Accounts ”** from the menu on the left and select **“Eagle Account Center”**.
3. Follow the **“Account Activation”** instructions for initializing your WebAdvisor account.

“How do I find out who my advisor is?”

We encourage you to touch base with your *advisor* when you have been admitted and then periodically throughout the completion of your program. This will be an opportunity for you to determine which courses to register for and to learn more about your program.

Your advisor’s contact information is located in your WebAdvisor account in the ‘Academic Profile’ section under ‘My Profile’.

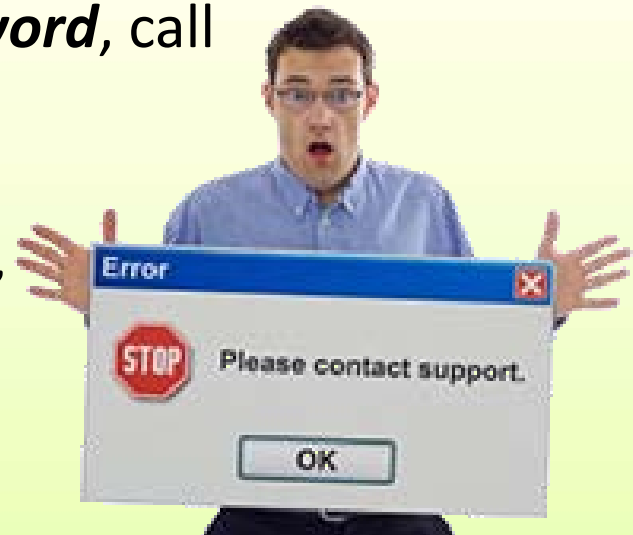
Are you ready to register for courses?

1. At the top right corner of the **WebAdvisor** main menu page click '**login**'
2. On the **WebAdvisor Login** page enter your **MSU ID number** (example: m0123456 (lower case m precedes the digits))
3. Enter the WebAdvisor **password** you have created and Click '**Submit**'
4. Click on '**Students**' on the **Main Menu** page.
5. You should now be on the '**Current Students - Student Menu**' page with links to all of the services available to you, including registration.

Are you experiencing problems setting up your WebAdvisor account?

If you are experiencing problems setting up your **WebAdvisor account** or you've **forgotten your password**, call (606) 783- 5000 for assistance.

Once your issues have been resolved, go to [WebAdvisor](#) to log in.



“I have registered for courses, what’s next?”

***ALL STUDENTS MUST ENROLL IN A PAYMENT PLAN OR PAY IN FULL A WEEK BEFORE CLASSES BEGIN TO PREVENT CANCELLATION OF CLASS SCHEDULES.**

To learn more about the types of payment plans and to view an online web demo, please visit the following link:

<http://www2.moreheadstate.edu/eagleexpress/index.aspx?id=56559>

**Be aware that financial information (monthly statements) will be emailed to your MSU student email account only.
You will not receive a bill in the mail.*

“How do I access my MSU email account?”

Click the image below to access **WebMail**. You can locate your email address in your **WebAdvisor** account **after** you have registered for courses. Your email address will be located in the **‘My Profile’** section.



For issues concerning your student email account, contact Information Technology at (606) 783-5000 tsc@moreheadstate.edu.

“Where do I locate my financial information?”

All **financial information**, including your account summary, can be located in the “Financial Information” section of your **WebAdvisor** account.

Should you need additional information concerning your financial aid, you should contact **Financial Aid’s** office at (606) 783-2000 or click the following link: www.moreheadstate.edu/finaid.

If you require additional assistance with your financial account, you can contact the **Office of Accounting and Budgetary Control** at (606) 783-2019 or www.moreheadstate.edu/abc.



“I am registered for courses, how do I determine which texts I need?”

Click the link below to visit the *University Bookstore* online:



“How do I participate in my online courses?”

You will be utilizing **Blackboard *Bb*** (*click on image below*) in order to participate in your online courses. Blackboard is a web-based course-management system designed to allow students and faculty to **participate in classes delivered online** or use online materials and activities to complement face-to-face or ITV teaching.



Blackboard®

Camden Carroll Library

Most likely, you will need the services of the ***Camden Carroll Library***. This will be an excellent resource for you to complete research for your courses.

Click the image to visit
Camden Carroll Library.



Program Completion

The completion of your program will come sooner than you think! You should apply for graduation ***at the beginning of the semester in which you anticipate*** completion.

Click on the following link for more information regarding degree completion.

www.moreheadstate.edu/graduate



Do you need additional information?

Feel free to contact the ***Graduate Office*** at any point during your educational experience if you require assistance. You can reach us by telephone at

(**606**) **783-2039** or via email at

grad@moreheadstate.edu

If you prefer to visit our office in person, we are located at **701 Ginger Hall**.